

Mounting kit for Motorola Repeater SLR 1000

DESCRIPTION

- > Mounting kit for Motorola Repeater SLR 1000.
- > Mount MPX 2/6 or MPX 70/6 easily in SLR 1000 repeater.
- > Installation instructions are included in the package.
- > Filters to be ordered separately.



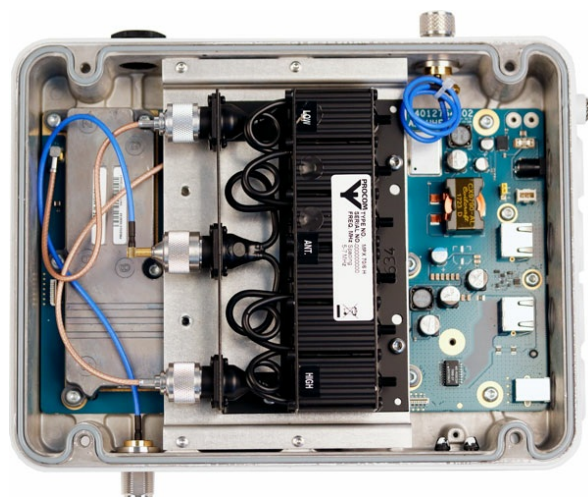
SPÉCIFICATIONS

Mécanique FR	
Contenu	1 Mounting plate 1 Adapter N(m) / MCX(f) 4 M4x6 Torx 20 4 M4 spring disc 4 M3x6 mm Torx 10
Câble De Raccordement	1 cable 280 mm with N(m) / MCX(m) 1 cable 200 mm with N(m) / MCX(m)
Outils	Torx Screwdriver 20 Torx Screwdriver 10 Flat pliers

COMMANDE

Model	N ° de produit.
Mounting kit for SLR 1000	200002725

INSTALLATION



Repeater & Filter not included in mounting kit.

MOTOROLA REPEATER UNIT

